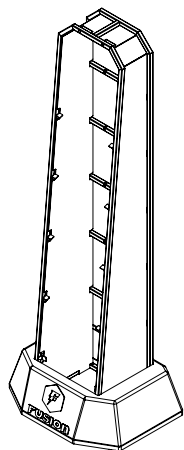
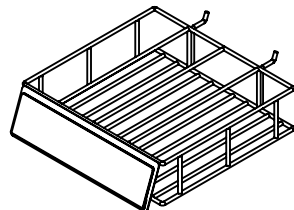


Componentes

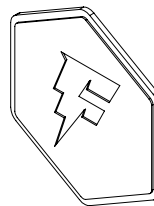
Display Montado



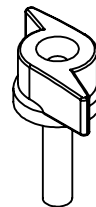
Conjunto Principal
01 Unidade



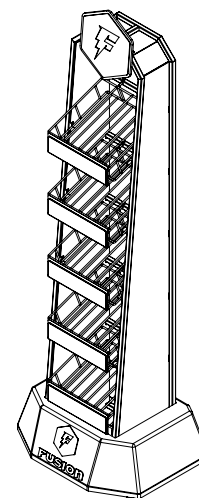
Bandeja
05 Unidades



Testeira
01 Unidade

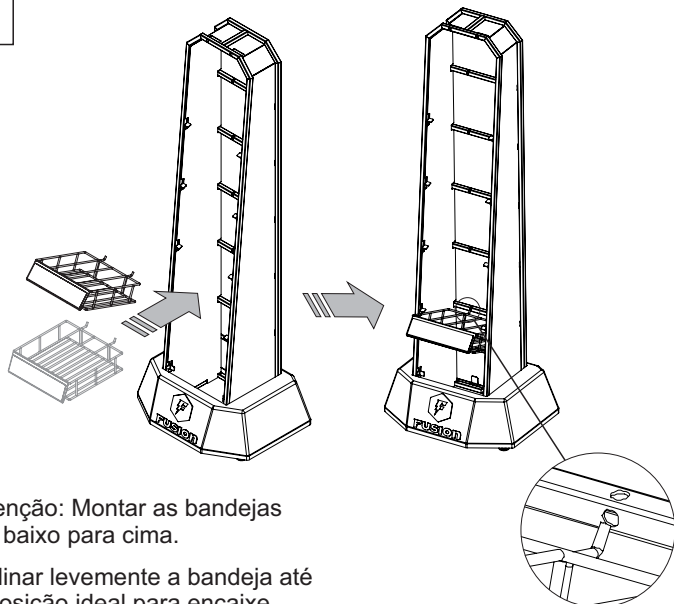


Manipulo
02 Unidades



Montagem

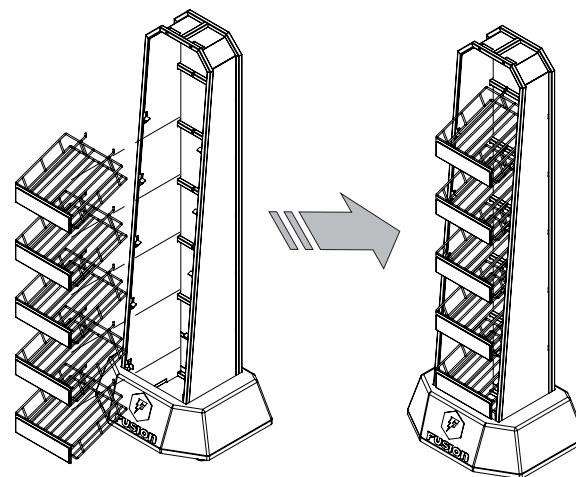
1



Atenção: Montar as bandejas de baixo para cima.

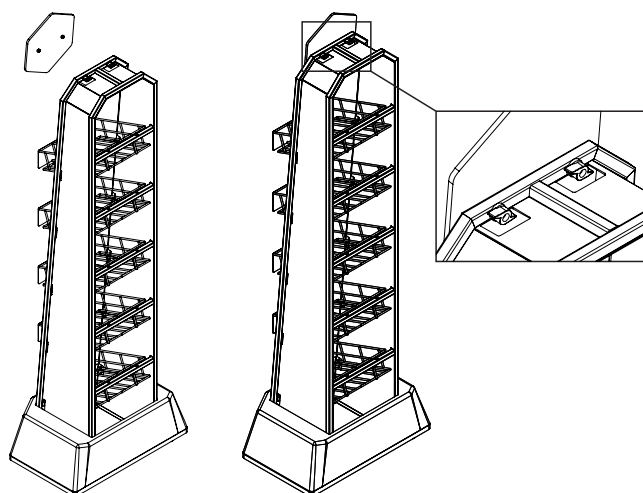
Inclinar levemente a bandeja até a posição ideal para encaixe.

2



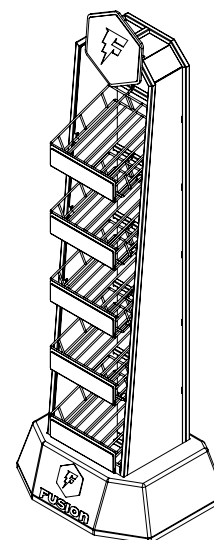
Posicionar as outras 4 Bandejas utilizando o mesmo procedimento.

3



Posicionar Manipulos conforme indicado na vista acima em seguida fixar a testeira nos dois pontos de fixação.

4



Para limpar, utilizar somente água, sabão neutro e um pano suave tipo flanela.